

18ft Class South Coast Championships 2022

4th & 5th June 2022
at
Baltimore Sailing Club



Notice of Race/Sailing Instructions

1.0 Organising Authority (OA)

The Organising Authority is the Baltimore Sailing Club
The Event is the National 18ft Class South Coast Championships

2.0 Rules and Eligibility

The Event is governed by the Racing Rules of Sailing (RRS) of World Sailing (2021-2024), the prescriptions of Irish Sailing (IS), and the National 18ft Class Association rules.

The OA reminds all persons in charge of their obligations regarding these Regulations.

3.0 Program of Races

The program of racing is as follows:

Sat 04/06/2022	FG: 11:55	4 races, each as soon as possible after the preceding race
Sun 01/08/2021	FG: 10:55	4 races, each as soon as possible after the preceding race

The race schedule may be modified by the OOD in the interest of completing as many of the planned races as possible.

4.0 Race Courses

The race course will be a windward-leeward course.

A blackboard will be used on the water to advise of the following:

- Number of rounds
- Harbour marks, if being used

The starting signals will be 5, 4, 1, go

All marks shall be rounded to port except if a gate is used at the leeward mark.

5.0 Target Time and Time Limits

The **target time** for each race will be 40 minutes from a valid start.

The **time limit** for the first boat will be 1 hour and all boats finishing more than 10 minutes after the first boat finishes shall be scored for their position at the most recent mark they rounded. Those boats shall proceed directly to the starting area for the next race.

If no boat manages to reach the windward mark within 20 minutes of the starting gun the race will be abandoned.

6.0 Shortened Course

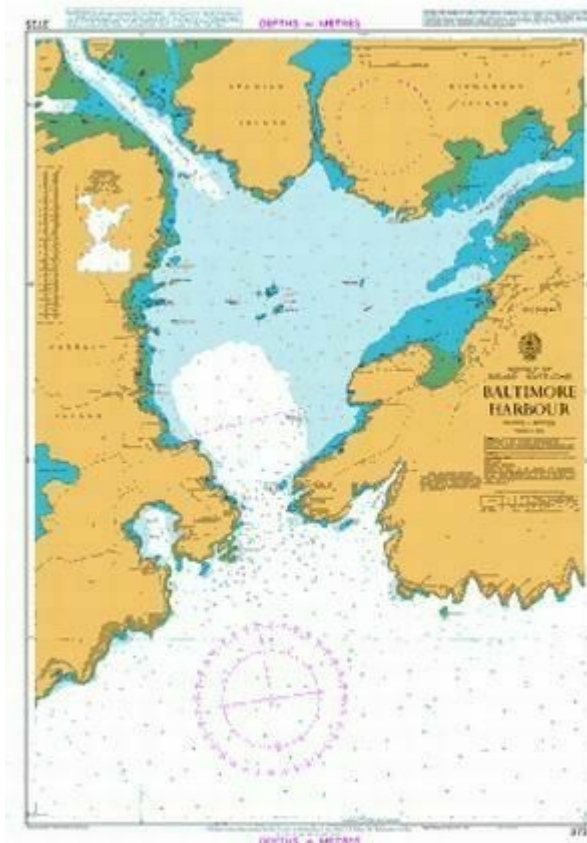
If required, the race shall be shortened as follows:

The blue and S flags will be flown on the committee boat and 2 sound signals made when the S flag is raised. A rib will be in place at the appropriate rounding mark flying the F flag and will give a sound signal to the boats. Boats are then to proceed directly, either up wind or down wind, to the finishing line which will be between the red and white pole on the committee boat and the ODM.

7.0 Racecourse Location

The racecourse location will be decided on each day giving due consideration to safety, wind and tidal conditions.

The two intended races areas are inside Baltimore Harbour or 1nm South of the Harbours mouth.



8.0 Scoring & Discards

The Low Point scoring system of Appendix A of RRS will apply.

If 5 or more races are sailed 1 discard shall apply.

8 races are scheduled, of which, 3 races shall constitute a series.

9.0 Protests

The time limit for lodging of protests will be 90 minutes after the finish of the last boat of the last race of the day.

10.0 Entry

All helms/persons responsible shall fill out the attached form.

Please ensure all names of crew on the boat for both days are listed.

Any change of crew must be lodged with the race OA and agreed prior to racing.

11.0 Disclaimer of Liability

A boat is entirely responsible for her own safety, whether afloat or ashore, and nothing, whether in the Notice of Race or Sailing Instructions or anywhere else reduces this responsibility.

It is for the boat to decide whether she is fit to sail in the conditions in which she will find herself. By launching or going to sea, the boat confirms that she is fit for those conditions and her crew is competent to sail and compete in them.

Nothing done by the organisers can reduce the responsibility of the boat nor will it make the organisers responsible for any loss, damage, death or personal injury, however it may have occurred, as a result of the boat taking part in the racing.

The organisers encompass everyone helping to run the race and the event, and include the Organising Authority, the Race Committee, the Race Officer, patrol boats and beachmasters.

The provision of patrol/safety boats does not relieve the boat of her responsibilities.

12.0 Insurance

Each participating boat shall be insured with valid third-party liability insurance with an adequate limit of liability per incident or the equivalent.